

# \$359,998 - 3 1215 Keswick Drive, Edmonton

MLS® #E4432282

**\$359,998**

2 Bedroom, 2.50 Bathroom, 1,101 sqft

Single Family on 0.00 Acres

Keswick Area, Edmonton, AB

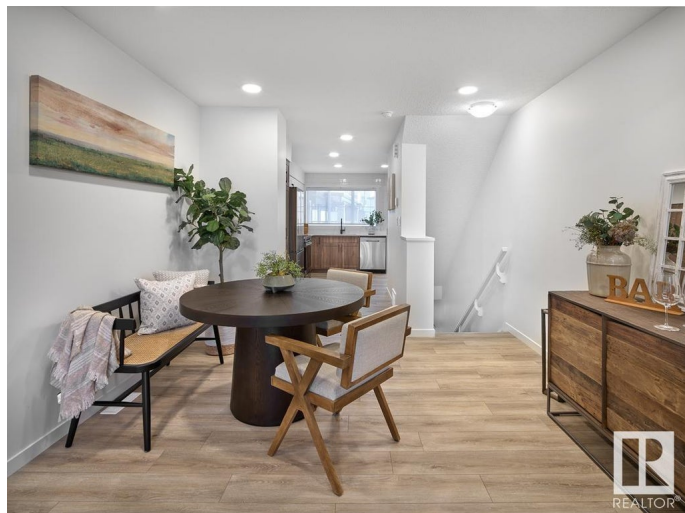
**NO CONDO FEES and AMAZING VALUE!**

You read that right welcome to this brand new townhouse unit the "Demi" Built by StreetSide Developments and is located in one of Edmonton's newest premier south west communities of Keswick Landing. With almost 1098 square Feet, it comes with front yard landscaping and a single over sized attached garage, this opportunity is perfect for a young family or young couple. Your main floor is complete with upgrade luxury Vinyl Plank flooring throughout the great room and the kitchen. The main entrance/ main floor has a good sized Laundry room and a powder room. Highlighted in your new kitchen are upgraded cabinets, upgraded counter tops and a tile back splash. The upper level has 2 bedrooms and 2 full bathrooms.\*\*\*Home is under construction and will be complete by October 25 2025 , photos used are from the previous show home colors and finishings may vary\*\*\*

Built in 2025

## Essential Information

MLS® #	E4432282
Price	\$359,998
Bedrooms	2
Bathrooms	2.50
Full Baths	2



Half Baths	1
Square Footage	1,101
Acres	0.00
Year Built	2025
Type	Single Family
Sub-Type	Residential Attached
Style	2 Storey
Status	Active

### **Community Information**

Address	3 1215 Keswick Drive
Area	Edmonton
Subdivision	Keswick Area
City	Edmonton
County	ALBERTA
Province	AB
Postal Code	T6W 4J5

### **Amenities**

Amenities	See Remarks
Parking	Over Sized, Single Garage Attached

### **Interior**

Interior Features	ensuite bathroom
Appliances	Garage Control, Garage Opener, See Remarks
Heating	Forced Air-1, Natural Gas
Stories	3
Has Basement	Yes
Basement	None, No Basement

### **Exterior**

Exterior	Wood, Stone, Vinyl
Exterior Features	Fenced, Golf Nearby, Landscaped, Park/Reserve, Playground Nearby, Public Swimming Pool, Public Transportation, Schools, Shopping Nearby
Roof	Asphalt Shingles
Construction	Wood, Stone, Vinyl
Foundation	Concrete Perimeter

### **Additional Information**

Date Listed April 22nd, 2025

Days on Market 2

Zoning Zone 56

DATA IS DEEMED RELIABLE BUT IS NOT GUARANTEED ACCURATE BY THE REALTORS® ASSOCIATION OF EDMONTON. COPYRIGHT 2025 BY THE REALTORS® ASSOCIATION OF EDMONTON. ALL RIGHTS RESERVED. Trademarks are owned or controlled by the Canadian Real Estate Association (CREA) and identify real estate professionals who are members of CREA (REALTOR®, REALTORS®) and/or the quality of services they provide (MLS®, Multiple Listing Service®)

Listing information last updated on April 24th, 2025 at 5:32pm MDT