

Courtesy Of Zoraiz Amir Of Initia Real Estate

# \$229,900 - 312 394 Windermere Road, Edmonton

MLS® #E4432114

**\$229,900**

2 Bedroom, 2.00 Bathroom, 778 sqft  
Condo / Townhouse on 0.00 Acres

Windermere, Edmonton, AB

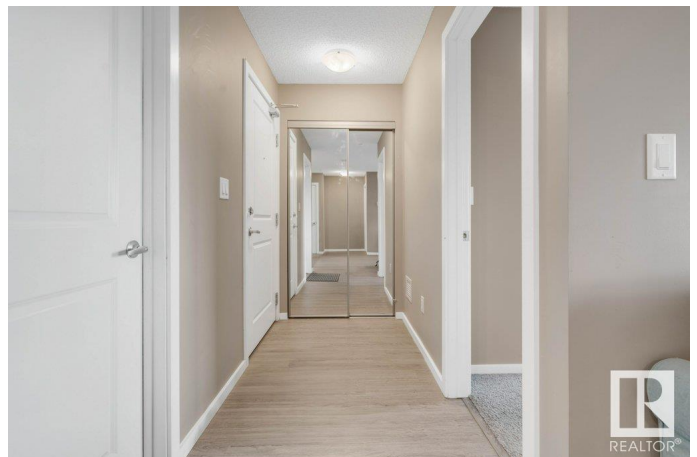
Elegant 2 BED 2 BATH Luxury suite in the heart of Windermere! Functional layout suitable for personal living or investment purposes. Enjoy features such as vinyl plank flooring, quartz counters, walk-in closet, large island, stainless steel appliances, in-suite laundry, pantry, balcony and underground parking! New washer dryer combo added in 2023! Grocery, restaurants, medical plaza, and K-9 school all available at walking distance. Well kept, and ready for a new owner!

Built in 2018

## Essential Information

MLS® #	E4432114
Price	\$229,900
Bedrooms	2
Bathrooms	2.00
Full Baths	2
Square Footage	778
Acres	0.00
Year Built	2018
Type	Condo / Townhouse
Sub-Type	Lowrise Apartment
Style	Single Level Apartment
Status	Active

## Community Information



Address	312 394 Windermere Road
Area	Edmonton
Subdivision	Windermere
City	Edmonton
County	ALBERTA
Province	AB
Postal Code	T6W 0R1

### **Amenities**

Amenities	Hot Water Natural Gas, No Animal Home, No Smoking Home, Parking-Visitor, Vinyl Windows, See Remarks
Parking Spaces	1
Parking	Underground

### **Interior**

Interior Features	ensuite bathroom
Appliances	Dishwasher-Built-In, Garage Opener, Oven-Microwave, Refrigerator, Stacked Washer/Dryer, Stove-Electric, TV Wall Mount, Curtains and Blinds
Heating	Baseboard, Natural Gas
# of Stories	4
Stories	1
Has Basement	Yes
Basement	None, No Basement

### **Exterior**

Exterior	Wood, Vinyl
Exterior Features	Airport Nearby, Golf Nearby, Playground Nearby, Public Transportation, Schools, View City
Roof	Asphalt Shingles
Construction	Wood, Vinyl
Foundation	Concrete Perimeter

### **Additional Information**

Date Listed	April 22nd, 2025
Days on Market	1
Zoning	Zone 56
Condo Fee	\$446

RESERVED. Trademarks are owned or controlled by the Canadian Real Estate Association (CREA) and identify real estate professionals who are members of CREA (REALTOR®®, REALTORS®®) and/or the quality of services they provide (MLS®®, Multiple Listing Service®®)

Listing information last updated on April 23rd, 2025 at 3:47pm MDT