

Courtesy Of Tanya Fowler Of 2% Realty Pro

\$215,000 - N/A, Edmonton

MLS® #E4429270

\$215,000

3 Bedroom, 1.50 Bathroom, 1,085 sqft
Condo / Townhouse on 0.00 Acres

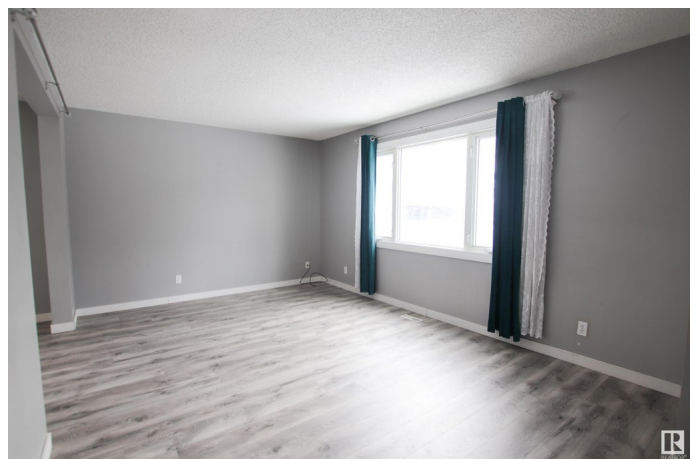
Tweddle Place, Edmonton, AB

This 3 bedrooms plus den end unit townhome in Twin Terrace is located in the family friendly community of Tweddle Place. This home has been updated with vinyl planks flooring, carpet, vinyl windows, high efficiency furnace and hot water tank. Kitchen has walk-in pantry and updated. Dining and living room has large windows making it bright and airy. Upstairs, you will find a beautifully renovated 4 pc bath, large master bedroom with walk-in closet and two other bedrooms overlooking green space. In the basement, you will find an open rec room as well as a den for your home office or perfect play room. When you need a break, step outside and get some fresh air in your own private fenced yard. Conveniently located within walking distance to schools, bus route 508 to Millbourne, nearby North Millbourne Community League with playground, outdoor rink, soccer field, shopping centers and LRT. Make this your next home or investment.

Built in 1975

Essential Information

MLS® #	E4429270
Price	\$215,000
Bedrooms	3
Bathrooms	1.50
Full Baths	1



Half Baths	1
Square Footage	1,085
Acres	0.00
Year Built	1975
Type	Condo / Townhouse
Sub-Type	Townhouse
Style	2 Storey
Status	Active

Community Information

Address	N/A
Area	Edmonton
Subdivision	Tweddle Place
City	Edmonton
County	ALBERTA
Province	AB
Postal Code	T6K 1V4

Amenities

Amenities	Hot Water Natural Gas, Parking-Plug-Ins, Parking-Visitor, Patio
Parking	Stall

Interior

Appliances	Dishwasher-Built-In, Microwave Hood Fan, Refrigerator, Stove-Electric
Heating	Forced Air-2, Natural Gas
Stories	3
Has Basement	Yes
Basement	Full, Finished

Exterior

Exterior	Wood, Stucco, Vinyl
Exterior Features	Corner Lot, Fenced, Landscaped, Playground Nearby, Public Transportation, Schools, Shopping Nearby
Roof	Asphalt Shingles
Construction	Wood, Stucco, Vinyl
Foundation	Concrete Perimeter

Additional Information

Date Listed	April 4th, 2025
-------------	-----------------

Days on Market	2
Zoning	Zone 29
Condo Fee	\$301

DATA IS DEEMED RELIABLE BUT IS NOT GUARANTEED ACCURATE BY THE REALTORS® ASSOCIATION OF EDMONTON. COPYRIGHT 2025 BY THE REALTORS® ASSOCIATION OF EDMONTON. ALL RIGHTS RESERVED. Trademarks are owned or controlled by the Canadian Real Estate Association (CREA) and identify real estate professionals who are members of CREA (REALTOR®, REALTORS®) and/or the quality of services they provide (MLS®, Multiple Listing Service®)

Listing information last updated on April 6th, 2025 at 1:32am MDT