

\$500,000 - 1128 Foxwood Crescent, Sherwood Park

MLS® #E4428870

\$500,000

3 Bedroom, 2.50 Bathroom, 1,526 sqft

Single Family on 0.00 Acres

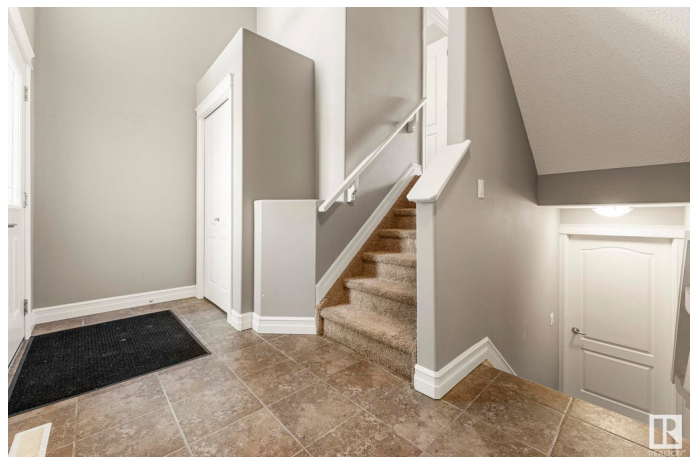
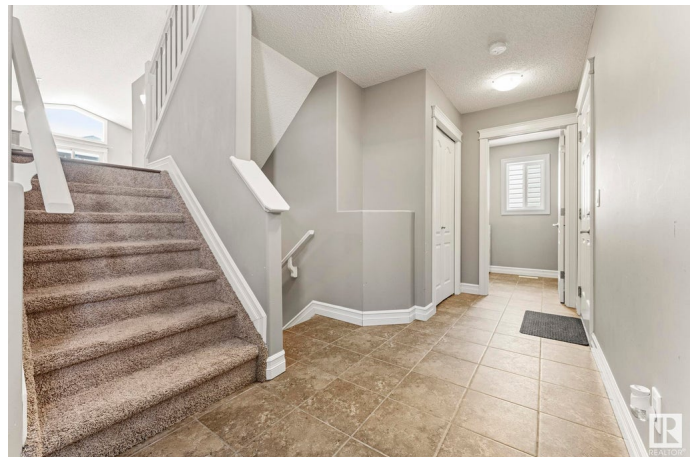
Foxboro, Sherwood Park, AB

Welcome to this charming bi-level home in the family-friendly community of Foxboro! Offering 1,525 sq ft of living space, this home features a spacious main floor master suite, 2 additional bedrooms, and 3 bathrooms, perfect for growing families. The open-concept living area boasts a vaulted ceiling and a cozy gas fireplace, creating a warm and inviting atmosphere. The central kitchen island is ideal for meal prep and entertaining. The unfinished basement provides unlimited potential for development, allowing you to customize the space to your needs. Additional highlights include main floor laundry and attached double car garage for convenience. While the home is well-loved, it will require new flooring throughout, offering the opportunity to personalize and refresh the space. Don't miss out on the potential this home has to offer in a wonderful neighborhood close to the new school, playgrounds and parks.

Built in 2011

Essential Information

MLS® #	E4428870
Price	\$500,000
Bedrooms	3
Bathrooms	2.50
Full Baths	2



Half Baths	1
Square Footage	1,526
Acres	0.00
Year Built	2011
Type	Single Family
Sub-Type	Detached Single Family
Style	Bi-Level
Status	Active

Community Information

Address	1128 Foxwood Crescent
Area	Sherwood Park
Subdivision	Foxboro
City	Sherwood Park
County	ALBERTA
Province	AB
Postal Code	T8A 4X4

Amenities

Amenities	Deck, Vaulted Ceiling, Vinyl Windows, HRV System
Parking	Double Garage Attached

Interior

Interior Features	ensuite bathroom
Appliances	Dishwasher-Built-In, Dryer, Microwave Hood Fan, Refrigerator, Stove-Electric, Washer
Heating	Forced Air-1, Natural Gas
Fireplace	Yes
Fireplaces	Tile Surround
Stories	1
Has Basement	Yes
Basement	Full, Unfinished

Exterior

Exterior	Wood, Vinyl
Exterior Features	Fenced, Playground Nearby, Schools
Roof	Asphalt Shingles
Construction	Wood, Vinyl
Foundation	Concrete Perimeter

Additional Information

Date Listed April 3rd, 2025

Days on Market 8

Zoning Zone 25

DATA IS DEEMED RELIABLE BUT IS NOT GUARANTEED ACCURATE BY THE REALTORS® ASSOCIATION OF EDMONTON. COPYRIGHT 2025 BY THE REALTORS® ASSOCIATION OF EDMONTON. ALL RIGHTS RESERVED. Trademarks are owned or controlled by the Canadian Real Estate Association (CREA) and identify real estate professionals who are members of CREA (REALTOR®, REALTORS®) and/or the quality of services they provide (MLS®, Multiple Listing Service®)

Listing information last updated on April 11th, 2025 at 8:32pm MDT