

\$939,800 - 6616 Knox Place, Edmonton

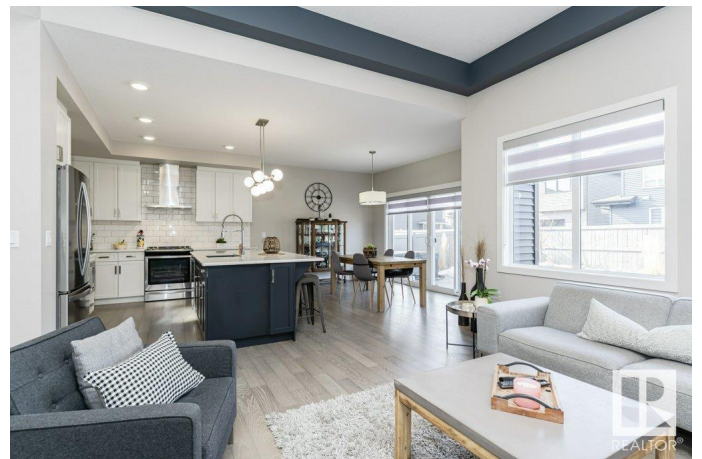
MLS® #E4424764

\$939,800

3 Bedroom, 2.50 Bathroom, 2,404 sqft
Single Family on 0.00 Acres

Keswick Area, Edmonton, AB

Immaculate triple attached garage home with private backyard oasis in the Arbour Estate Homes of Keswick. Step inside your thoughtfully designed living space offering soaring 9 to 11-foot ceilings, oversized windows w/ custom coverings providing plenty of natural light, & modern, high-end finishes throughout. Main floor boasts a bright & spacious kitchen with plenty of cabinetry, abundant counter space & large quartz island. The open-concept design flows into a grand vaulted family room, creating an airy & inviting ambience. Upstairs provides 3 generously sized bedrooms, 2 full bathrooms, bonus room & spacious laundry room. Primary bedroom features large walk in closet & stunning 5 piece ensuite. Backyard retreat with 12x30 ft inground heated pool surrounded by sun warmed stamped concrete, trees, custom pool shed, sidewalk to front. Main floor office. Nearby designated school is Joey Moss. No smoking/animal home, smart/programmable thermostat, 150 amp electrical panel. Fantastic 44 ft frontage estate lot.



Built in 2019

Essential Information

MLS® #	E4424764
Price	\$939,800

Bedrooms	3
Bathrooms	2.50
Full Baths	2
Half Baths	1
Square Footage	2,404
Acres	0.00
Year Built	2019
Type	Single Family
Sub-Type	Detached Single Family
Style	2 Storey
Status	Active

Community Information

Address	6616 Knox Place
Area	Edmonton
Subdivision	Keswick Area
City	Edmonton
County	ALBERTA
Province	AB
Postal Code	T6W 4A1

Amenities

Amenities	No Animal Home, No Smoking Home, Patio, Pool-Outdoor, Smart/Program. Thermostat, Vaulted Ceiling
Parking Spaces	6
Parking	Over Sized, Triple Garage Attached
Has Pool	Yes

Interior

Interior Features	ensuite bathroom
Appliances	Dishwasher-Built-In, Dryer, Garage Control, Garage Opener, Hood Fan, Oven-Microwave, Refrigerator, Stove-Electric, Washer, Window Coverings, Pool Equipment
Heating	Forced Air-1, Natural Gas
Fireplace	Yes
Fireplaces	Wall Mount
Stories	2
Has Basement	Yes
Basement	Full, Unfinished

Exterior

Exterior	Wood, Brick, Vinyl
Exterior Features	Fenced, Flat Site, Landscaped, Low Maintenance Landscape, Playground Nearby, Schools
Roof	Asphalt Shingles
Construction	Wood, Brick, Vinyl
Foundation	Concrete Perimeter

School Information

Elementary	Joey Moss
Middle	Joey Moss
High	Hairy Ainlay

Additional Information

Date Listed	March 8th, 2025
Days on Market	6
Zoning	Zone 56
HOA Fees Freq.	Annually

DATA IS DEEMED RELIABLE BUT IS NOT GUARANTEED ACCURATE BY THE REALTORS® ASSOCIATION OF EDMONTON. COPYRIGHT 2025 BY THE REALTORS® ASSOCIATION OF EDMONTON. ALL RIGHTS RESERVED. Trademarks are owned or controlled by the Canadian Real Estate Association (CREA) and identify real estate professionals who are members of CREA (REALTOR®, REALTORS®) and/or the quality of services they provide (MLS®, Multiple Listing Service®)

Listing information last updated on March 14th, 2025 at 10:17am MDT